

RH4 Finned tube heater



RH 4 (Type DRH)

Application

Ex finned tube heaters serve space heating in hazardous areas. They are used mainly in petrochemical, chemical and pharmaceutical industries, oil and natural & LPG gas production and distribution as well as in paint and lacquer industries.

Design

A special ceramic element is fitted in a finned tube. It can be replaced via the attached flameproof casing. The heating elements are chosen in such a way that the temperature class T3 is not exceeded.

Selection table:

Type	Temp. class	Nominal power [W]	Power consumption [W]	Short-time initial current [A]	L1 [mm]	L2 [mm]	Weight [kg]
DRH-0732-1	T3	500	360	3,7	765	600	12
DRH-1232-1	T3	1000	780	7,8	1260	1095	18
DRH-1832-1	T3	1500	1145	11,0	1865	1700	25

Temperature classes: T3 < 200°C

Type of protection

Explosion protection type "flameproof enclosure" and "increased safety", EX II 2 G EEx de IIC T3 according to EN 50014 ff.

Certificate of conformity PTB 03 ATEX 1029. Approved for all IIA, IIB and IIC hazardous areas .

Degree of protection IP66 according to EN 60529. Thermal protection class I according to EN 60519-2.

Electrical connection

230VAC +6% at terminals U1, N and PE.

Nominal connection cross section 2,5mm². Cable gland M25x1,5 for cable diameters of 8 to 13mm.





TR1 Temperature regulator

TR1 (QTREK) temperature regulator

Application

The Ex-temperature regulator serves as an on-off controller to control room temperatures, medium (with an additional immersion pipe) or surface temperatures within hazardous areas.

Design

In a casing made of impact resistant polyester a temperature regulator is installed and embedded in pure mineral material. The capillary as well as the electric wires are lead through screw couplings. The terminals are located in an EExe terminal box made of the same material.

Type of protection

Type of protection "powder filling" and "increased safety" EX II 2 G EEx qe II T6 according to EN 50014-77. Protection type at least IP54 according to EN 60529. Protection class I according to DIN VDE 0106 part 1 and VDE 0631.

Certificate of conformity ZELM 02 ATEX 0077. Approved for all IIA, IIB and IIC hazardous areas.

Electrical connection

Current rating 16A, 400VAC respectively 0,25A, 250VDC. Nominal cross section 2,5mm². Cable gland M20x1,5 for cable diameter 6 to 12mm + 1 plug M20.

Selection table

Type	Range of adjustment °C	Probe limit temperature °C	Probe length "L" mm	Probe and capillary material	Switching differential K
QTREK	-20...+50	75	200	Copper	2,5
QTREK	0...70	95	200	Copper	2,5
QTREK	0...100	125	150	Copper	2,5
QTREK	0...150	170	110	Copper	3,75
QTREK	0...190	230	90	Copper	5,0
QTREK	40...290	335	90	Stainless steel	7,5



TR5 Thermostat (Type QTRKK)

Application

Room thermostat for wall mounting for simple controlling of room temperatures (i.e. antifreeze) in hazardous areas.

Design

In a casing made of impact resistant polyester a fixed set temperature regulator is mounted and embedded in pure mineral material. The sensor as well as the connecting cable are lead through screw couplings. Fix settings of +5, +10, and +15°C available (must be stated on order).

Type of protection

Ignition type "powder filling" EX II 2 G EEx q II T6 according to EN 50014-77 (VDE 0171). Protection type at least IP54 according to DIN 40050 resp. IEC 144. Protection class I according to DIN VDE 0106 part 1 and VDE 0631.

Certificate of conformity ZELM 02 ATEX 0077. Approved for all IIA, IIB and IIC hazardous areas.

Electrical connection

400VAC-16A resp. 250VDC-0,24A.

2 mtr. connecting cable H07 RN-F 3x1,5mm².



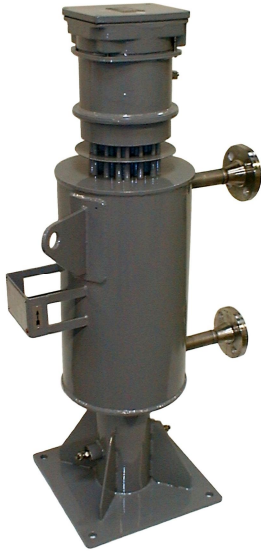


Other products



Flow heater

Direct heating of liquid or gaseous mediums like oil, water, process fluids- air, natural gas, technical gas applications, steam. In general built according clients specifications



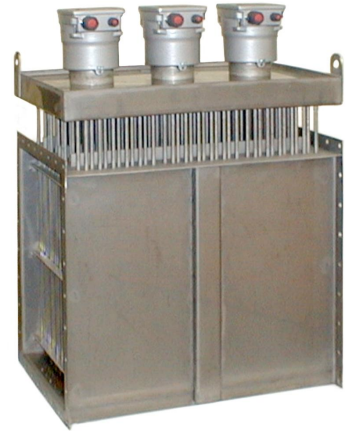
Air heater

For installation in HVAC plants, in pipe systems, in ovens or heating chambers.

Gas preheater

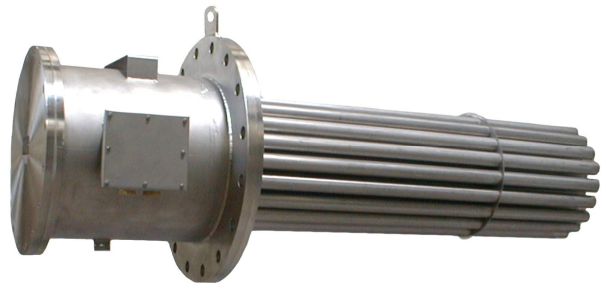
Indirect heating of gas (air, natural gas, fuel gas, technical gas applications, steam) liquids or vaporizer,

Tube coil and heating bundle cast in aluminium block for indirect heating. Safe operation without flow control. Approved for natural gas applications.



Immersion heater

Lube oil heater for turbines, compressors, pumps, heater for oil tanks, water and other liquids, motor anticondensation heaters etc.



Built in temperature limiter and regulator for protection of heating elements. Thread or flange connection, with heating bundle made of tubular heating elements, cartridge type heater with exchangeable heating inserts, Design according clients specifications possible



Special electric heater

- Contact heaters for heating of machinery and apparatus
- Laboratory heating units
- Complete heating systems or special solutions to customer's requirements.

ELECTROMACH B.V.
Jan Tinbergenstraat 193
NL, 7559 SP Hengelo
Tel: +31 (0)74 2 472 472
E-mail: info@electromach.nl
www.electromach.com

STAHL N.V.
Sint-Gillislaan 6 bus 3
B, 9200 Dendermonde
Tel: +32 (0)52 211 351
E-mail: info@stahl.be
www.stahl.be

